

The Courts: A Dilemma in Administration

DePaul College of Law

Follow this and additional works at: <https://via.library.depaul.edu/law-review>

Recommended Citation

DePaul College of Law, *The Courts: A Dilemma in Administration*, 23 DePaul L. Rev. 601 (1973)
Available at: <https://via.library.depaul.edu/law-review/vol23/iss1/31>

This Case Notes is brought to you for free and open access by the College of Law at Digital Commons@DePaul. It has been accepted for inclusion in DePaul Law Review by an authorized editor of Digital Commons@DePaul. For more information, please contact digitalservices@depaul.edu.

THE COURTS: A DILEMMA IN ADMINISTRATION

GROWING awareness and thus attention has been focused upon the ever increasing work load of the courts. No court system, state or federal, has been exempted from the steady rise of cases annually filed.¹ This has prompted both queries about its effect on fair adjudication² and about methods to solve the problem.³ Intelligent valuations of this problem inevitably lead to such basic inquiries as to the role of the judge, the advocate and the jury as well as an examination of their performance both quantitatively and qualitatively.⁴

Illinois courts are also experiencing the strain of this dilemma. The purpose of this section of the Survey is to acquaint the reader with this problem in Illinois. Among other sources that have spurred relevant discussion, the Constitution of Illinois, in article VI, section 17, requires that annual conferences be held to consider "the work of the courts and to suggest improvements in the administration of justice. . . ." Of the eight professor-reporters to the Illinois Judicial Conference, five presently teach at the DePaul University College of Law (Professors Robert E. Burns, Vincent Vitullo, Leigh H. Taylor and Donald Hermann and Dean Richard C. Groll), all of whom have at one time or another addressed themselves to the issue at hand.

1. Cf. Lilly & Scalia, *Appellate Justice: A Crisis in Virginia*, 57 VA. L. REV. 3 (1971); McLaughlin, *Of Men and Buildings—Crisis in Judicial Administration*, 55 MASS. L.Q. 331 (1970).

2. NeMoyer, *Issues of Propriety in Negotiated Justice*, 47 DENVER L.J. 367 (1970).

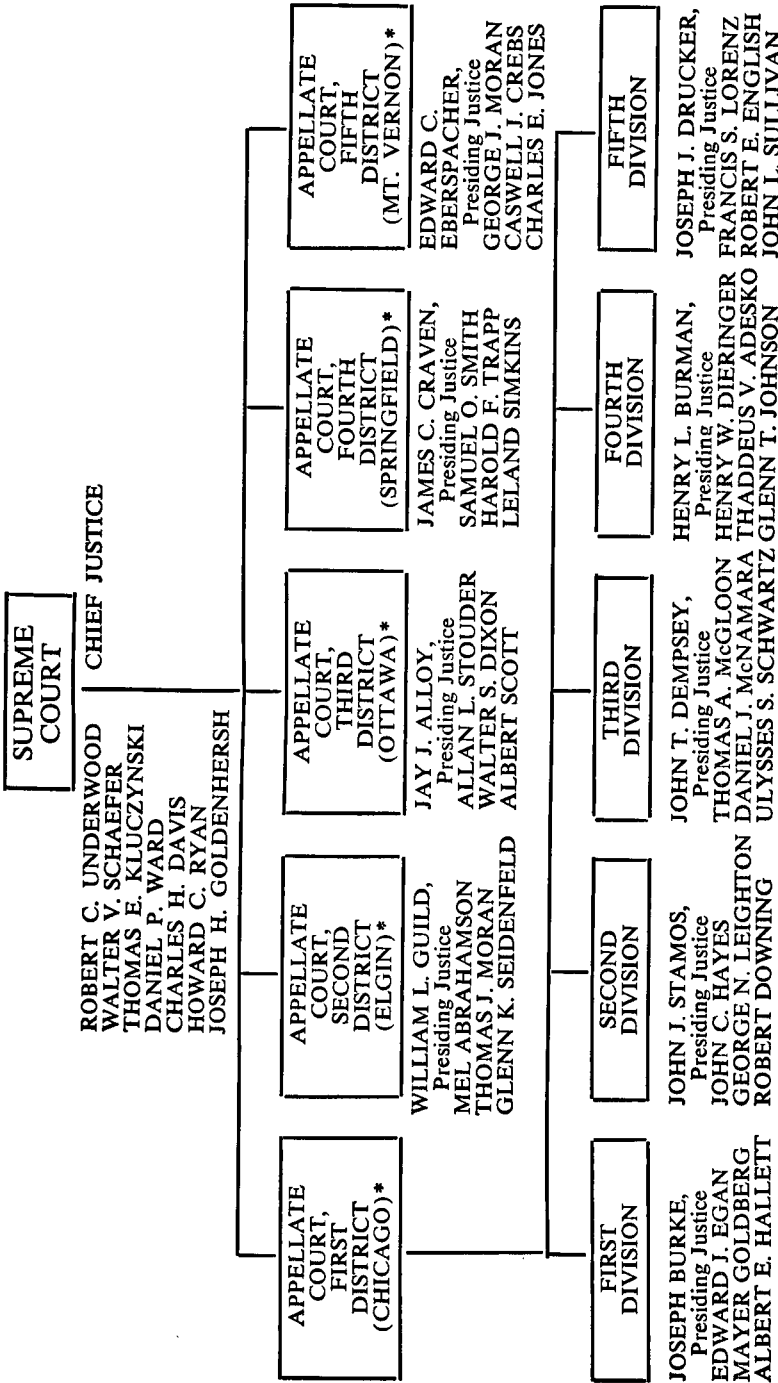
3. See Burger, *Bringing the Judicial Machinery Up to Demands Made on It*, 42 PA. B. ASS'N. Q. 262 (1971) (address by Chief Justice Burger); Landis, *Jury Trials and the Delay of Justice*, 56 A.B.A.J. 950 (1970) (a discussion of the abolition of jury trials in civil actions); Lawless, *Machinery of Criminal Justice in England and the United States*, 21 SYRACUSE L. REV. 1061 (1970); *Symposium on Judicial Reform: Views from the Bench*, 19 DEPAUL L. REV. 441 (1970).

4. For an in-depth study of the Arizona court system, touching on all the relevant subtopics, see *Arizona Court System*, 1973 LAW AND SOC. ORDER 1, 1-262; Tydings, *Improving Archaic Judicial Machinery*, 57 A.B.A.J. 154 (1971) (a discussion of the National Court Assistance Act).

Rather than delve into the quagmire of administrative theory, however, this section is devoted to presenting the "cold" facts from which the reader may draw his own conclusions.⁵

5. The following statistics are derived from the 1970 and 1971 Annual Report to the Supreme Court of Illinois published by the Administrative Office of the Illinois Courts.

Structure of the Illinois Courts



* Designates the city in which that particular district of the Appellate Court resides.

SUPREME COURT OF ILLINOIS

Dockets in the Supreme Court	1971	1972	1973
Advisement Docket	316	431	353
Rehearing Docket	88	70	58
People's Docket	2,870	1,380	444
Civil Docket	777	458	412
Leave to Appeal Docket	364	493	643
Motions			
Presented	1,664	930	580
Dispositions Announced	1,633	911	567
Remand on Confession of Error	11	6	1
Petitions For Leave to Appeal			
Allowed	62	77	118
Denied or Dismissed	273	370	437
Petitions For Rehearing			
Allowed	4	2	1
Denied or Dismissed	73	68	45
Call of the People's Docket			
Submitted on Briefs	27	16	11
Argued Orally	131	88	70
Dismissed on Motion	15	7	1
Dismissed by Court	18	21	7
Call of the Civil Docket			
Submitted on Briefs	11	11	9
Argued Orally	122	129	96
Dismissed on Motion	12	8	9
Dismissed by Court	19	12	11
Transferred to Appellate Court	245	143	21
Opinions Filed	208	246	181
Memorandum Opinions Filed	62	72	12
Prisoner Cases			
Habeas Corpus	81	56	30
Mandamus	58	65	68
Other	116	135	137
Counsel Appointed	78	35	5
Appeals	28	10	9
Petitions For Leave to Appeal	8	32	20
Number of Days Sitting	83	70	63
Lawyers Admitted to the Bar	1,060	1,221	1,712

CASES DISPOSED OF IN THE APPELLATE COURT IN 1971 AND 1972

Appellate District	1971		1972		1971		1972		1971		1972		1971		1972	
	Civil		Criminal		Civil		Criminal		Civil		Criminal		Civil		Criminal	
	1971	1972	1971	1972	1971	1972	1971	1972	1971	1972	1971	1972	1971	1972	1971	1972
Affirmed	158	312	212	322	84	53	60	108	66	54	67	75	66	54	67	75
Reversed	137	90	174	71	31	34	34	31	18	27	28	27	18	27	28	27
Affirmed in Part	20	14	25	23	6	4	14	4	1	6	8	3	1	6	8	3
Modified	—	—	4	24	—	—	1	8	—	—	—	—	—	—	—	—
Dismissed**	191	44	288	95	35	9	62	38	33	14	35	24	33	14	35	24
with opinion	6	3	8	2	—	—	4	6	—	—	—	—	—	—	—	—
without opinion	185	41	280	93	—	—	58	32	—	—	—	—	—	—	—	—
Other Dispositions	22	32	—	—	9	10	—	—	5	4	—	—	5	4	—	—

* Includes 25 affirmed as modified.

** 1971 dismissed are not fully broken down.

Appellate District	1971		1972		1971		1972		1971		1972		1971		1972	
	Civil		Criminal		Civil		Criminal		Civil		Criminal		Civil		Criminal	
	1971	1972	1971	1972	1971	1972	1971	1972	1971	1972	1971	1972	1971	1972	1971	1972
Affirmed	39	49	48	87	36	54	53	59	383	522	440	651	383	522	440	651
Reversed	17	16	32	27	23	28	17	31	226	195	285	187	226	195	285	187
Affirmed in Part	7	8	10	5	2	—	10	5	36	32	67	40	36	32	67	40
Modified	—	—	—	—	—	—	1	20	—	—	6	52	—	—	6	52
Dismissed	—	3	51	39	45	14	76	90	304	84	512	286	304	84	512	286
with opinion	—	3	4	3	—	—	4	—	—	—	20	11	—	—	20	11
without opinion	—	—	47	36	—	—	72	90	—	—	492	275	—	—	492	275
Other Dispositions	28	18	—	—	9	25	—	—	73	89	—	—	73	89	—	—

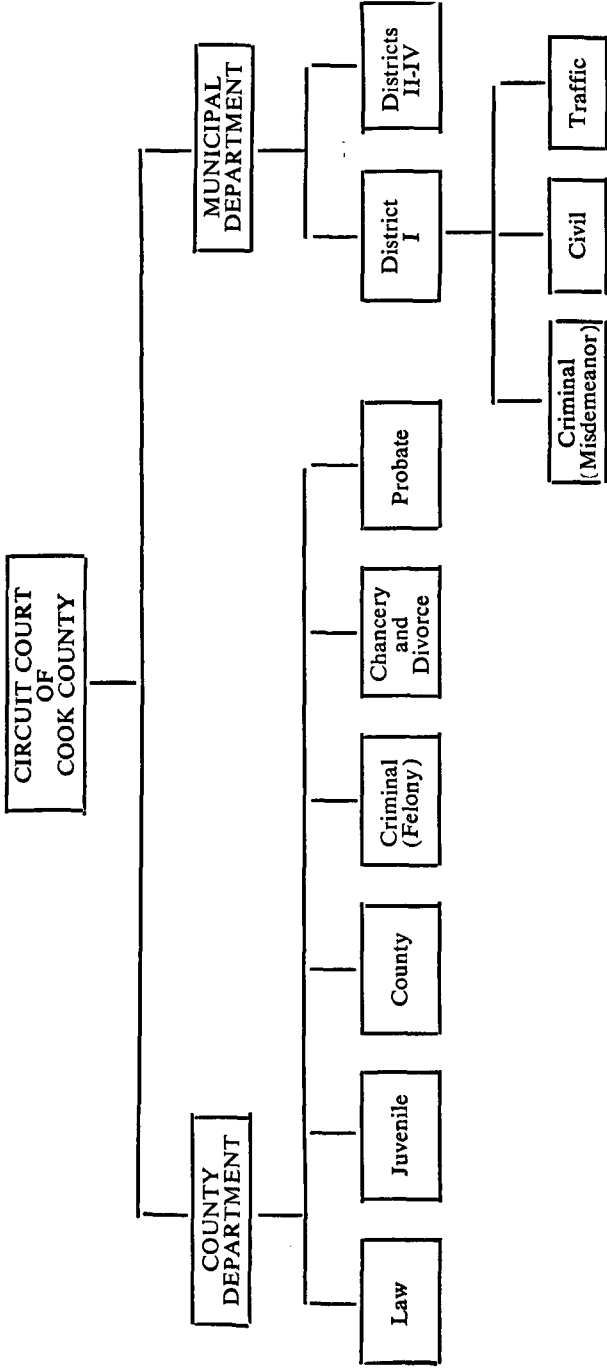
TIME LAPSE BETWEEN DATE BRIEFS WERE FILED AND
DISPOSITION OF CASES DECIDED IN THE APPELLATE COURT
DURING 1971 AND 1972

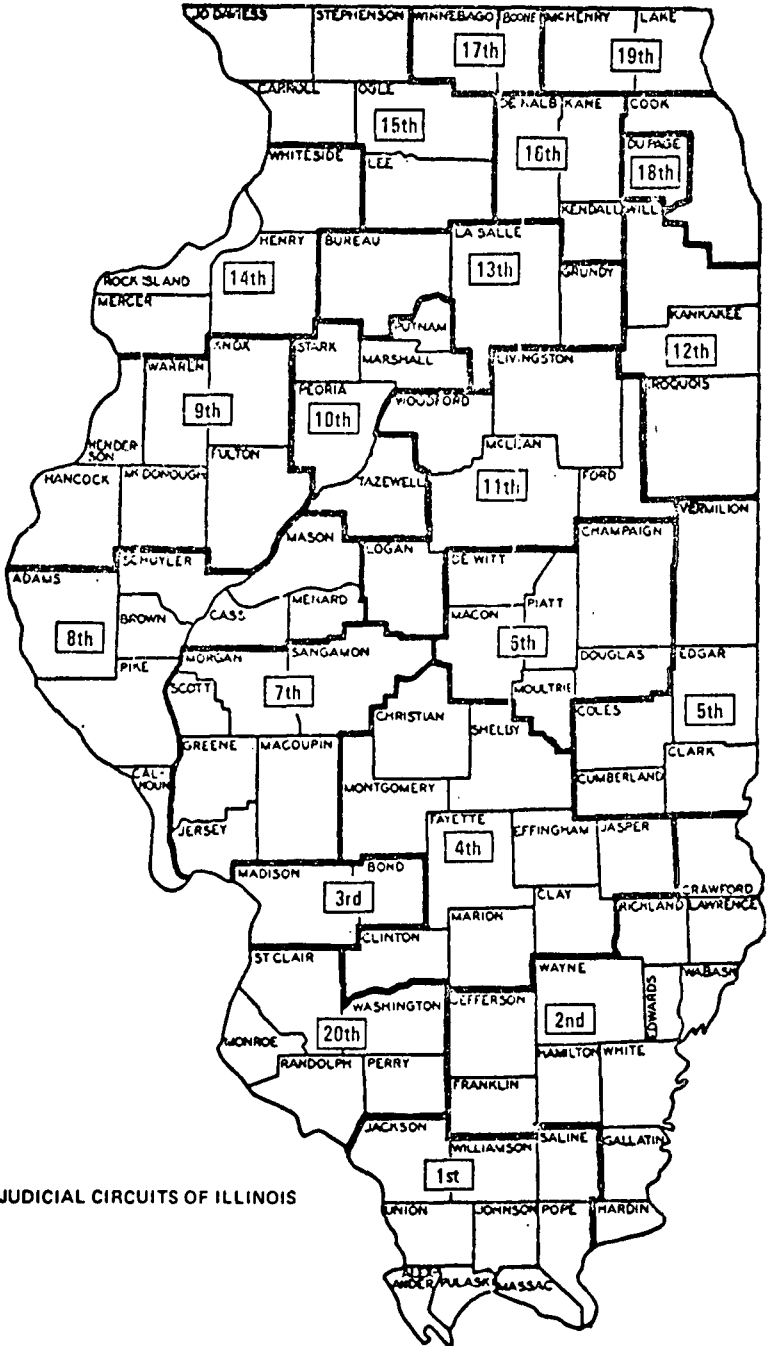
Appellate District	1971		1972		1971		1972		1971		1972	
	Civil	Criminal	Civil	Criminal	Civil	Criminal	Civil	Criminal	Civil	Criminal	Civil	Criminal
Time Elapsed												
Under 6 Mos.	95	28	127	149	37	23	101	120	35	28	125	121
6-12 Mos.	116	61	268	284	111	61	62	65	57	54	12	6
1-1½ Years	82	97	176	91	16	24	7	4	29	20	1	2
1½-2 Years	81	105	113	10	1	2	1	—	1	2	—	—
2-3 Years	125	163	14	1	—	—	—	—	1	1	—	—
Over 3 Years	29	38	5	—	—	—	—	—	—	—	—	—
Totals												
	18	13	48	71	38	41	63	145	223	133	464	606
	28	42	63	79	25	44	57	49	337	262	462	483
	39	30	28	6	32	25	32	8	198	196	244	111
	4	7	1	2	16	6	4	3	103	122	119	15
	2	2	1	—	4	5	1	—	132	171	16	1
	—	—	—	—	—	—	—	—	29	38	5	—

Appellate District

Time Elapsed
Under 6 Mos.
6-12 Mos.
1-1½ Yrs.
1½-2 Yrs.
2-3 Yrs.
Over 3 Yrs.

II. ILLINOIS CIRCUIT COURTS





THE JUDICIAL CIRCUITS OF ILLINOIS

NUMBER OF CASES BEGUN & TERMINATED IN THE CIRCUIT COURT 1971 & 1972

First Circuit

Division	1971					1972				
	Begun	Rein-stated	Trans-ferred	Net Added	Termi-nated	Begun	Rein-stated	Trans-ferred	Net Added	Termi-nated
Law over \$15,000										
Jury	214	14	+12	240	222	162	2	+1	165	207
Non-Jury	73	0	-12	61	38	55	1	-1	55	59
Law under \$15,000										
Jury	55	4	+7	66	52	38	—	+12	50	44
Non-Jury	494	21	-7	508	535	433	3	-11	425	415
Chancery	149	4	—	153	144	124	2	—	126	127
Misc. Remedies	86	1	—	87	144	73	—	—	73	67
Eminent Domain	35	0	—	35	15	33	—	—	33	31
Tax	319	0	—	319	414	166	—	—	166	197
Mun. Corps	15	0	—	15	6	5	—	—	5	5
Mental Health	723	0	—	723	725	859	—	—	859	857
Divorce	1062	13	—	1075	1071	1007	11	—	1018	1062
Family	271	1	—	272	336	258	11	—	269	279
Juvenile	252	0	—	252	225	233	1	—	234	283
Felony	442	7	-1	448	469	608	7	-22	593	506
Misdemeanors										
Peniten.	140	10	0	150	157	202	2	-2	202	184
Jail/Fine	2036	29	+1	2066	2088	2219	2	+24	2245	2139
Small Claims	5433	4	0	5437	5736	3512	5	-1	3516	3409
Probate	554	2	—	556	541	482	3	—	485	547
Ordin. Violations	3034	19	—	3053	2982	3000	—	—	3000	2908
Traffic	17146	94	—	17240	16702	19199	—	—	19199	19167
Conservation Viol.	426	0	—	426	421	313	—	—	313	342
Total	32959	223	—	33182	33023	32981	50	—	33031	32835

Second Circuit

Division	1971					1972				
	Begun	Rein-stated	Trans-ferred	Net-Added	Termi-nated	Begun	Rein-stated	Trans-ferred	Net-Added	Termi-nated
Law over \$15,000										
Jury	144	3	+2	149	162	91	2	+1	94	136
Non-Jury	519	—	-2	57	96	65	2	-1	66	44
Law under \$15,000										
Jury	42	—	+6	48	34	26	1	+6	33	35
Non-Jury	558	3	-6	555	505	482	2	-6	478	447
Chancery	143	3	—	146	119	124	4	—	128	137
Misc. Remedies	44	1	—	45	48	52	1	—	53	40
Eminent Domain	27	—	—	27	11	14	—	—	14	21
Tax	242	—	—	242	168	237	—	—	237	214
Mun. Corps	22	—	—	22	8	16	—	—	16	8
Mental Health	140	—	—	140	119	127	—	—	127	77
Divorce	1031	25	—	1056	980	1093	21	—	1114	981
Family	310	2	—	312	230	302	—	—	302	259
Juvenile	279	1	—	280	166	239	5	—	244	145
Felony	463	3	-18	448	419	477	4	-18	463	326
Misdemeanors										
Peniten.	148	1	-4	145	88	117	1	+3	121	103
Jail/Fine	2156	3	+22	2181	2026	1781	—	+15	1796	1728
Small Claims	3698	3	—	3701	3252	2655	3	—	2658	2640
Probate	718	—	—	718	473	784	1	—	785	626
Ordin. Violations	1244	—	—	1244	1152	1097	—	—	1097	901
Traffic	13796	—	—	13796	12308	12953	—	—	12953	12149
Conservation Viol.	210	—	—	210	204	244	—	—	244	267
Total	25474	48	—	22522	22568	22976	47	—	23023	21284

Third Circuit

Division	1971					1972				
	Begun	Rein-stated	Trans-ferred	Net Added	Termi-nated	Begun	Rein-stated	Trans-ferred	Net Added	Termi-nated
Law over \$15,000										
Jury	440	4	48	492	565	480	8	+45	533	543
Non-Jury	276	1	-40	237	219	273	2	-43	232	184
Law under \$15,000										
Jury	296	36	142	474	551	253	4	+75	332	318
Non-Jury	507	22	-145	384	596	526	1	-75	452	379
Chancery	210	2	—	2121	185	240	—	—	240	252
Misc. Remedies	187	1	—	1881	182	207	1	—	208	223
Eminent Domain	45	—	—	45	14	17	—	—	17	7
Tax	298	—	—	2981	177	377	—	—	377	61
Mun. Corps	14	—	—	14	14	5	—	—	5	5
Mental Health	629	—	—	629	678	425	—	—	425	435
Divorce	1650	—	—	1650	1654	1603	—	—	1603	1753
Family	837	—	—	837	863	630	—	—	630	701
Juvenile	254	—	—	254	188	346	—	—	346	240
Felony	329	—	—	329	297	275	—	—	273	276
Misdemeanors										
Peniten.	1	—	—	1	1	4	—	—	4	4
Jail/Fine	8059	—	—	8058	7914	8629	—	+2	8631	8442
Small Claims	5834	—	-5	5829	6384	7698	—	-2	7696	5138
Probate	683	—	—	683	560	703	—	—	703	562
Ordin. Violations	4854	—	—	4854	5309	8652	—	—	8652	8222
Traffic	13484	—	—	13484	13320	11214	—	—	11214	10542
Conservation Viol.	7	—	—	7	7	21	—	—	21	7
Total	38894	66	—	38894	39578	42578	16	—	42594	38294

Fourth Circuit

Division	1971					1972				
	Begun	Rein- stated	Trans- ferred	Net Added	Termi- nated	Begun	Rein- stated	Trans- ferred	Net Added	Termi- nated
Law over \$15,000										
Jury	144	2	+2	148	130	102	4	+2	108	144
Non-Jury	31	—	—	31	23	44	1	-1	44	24
Law under \$15,000										
Jury	35	—	—	35	26	15	2	—	17	29
Non-Jury	601	5	-2	604	507	589	8	-1	596	578
Chancery	106	3	—	109	99	106	9	—	115	180
Misc. Remedies	49	—	—	49	35	50	—	—	50	52
Eminent Domain	35	—	—	35	10	8	—	—	8	14
Tax	401	1	—	402	389	409	—	—	409	413
Mun. Corps	—	—	—	—	—	2	4	—	6	6
Mental Health	98	—	—	98	84	52	1	—	53	60
Divorce	799	36	—	835	826	908	47	—	955	851
Family	386	1	—	327	239	345	2	—	347	365
Juvenile	210	—	—	210	295	263	—	—	263	227
Felony	283	—	-17	266	286	423	—	-17	406	312
Misdemeanors										
Peniten.	51	1	-6	46	47	55	—	-3	52	44
Jail/Fine	1489	6	+23	1518	1718	1612	2	+20	1634	1588
Small Claims	2910	66	—	2976	2948	2775	92	—	2867	2692
Probate	1333	—	—	1333	920	1464	2	—	1466	962
Ordin. Violations	1103	—	—	1103	1048	1008	—	—	1088	983
Traffic	18327	—	—	18327	17833	18769	—	—	18769	18624
Conservation Viol.	772	—	—	772	820	477	—	—	477	507
Total	29103	121	—	29224	28283	29556	174	—	29730	28655

Fifth Circuit

Division	1971					1972				
	Begun	Rein- stated	Trans- ferred	Net Added	Termi- nated	Begun	Rein- stated	Trans- ferred	Net Added	Termi- nated
Law over \$15,000										
Jury	123	3	+2	128	149	113	2	+1	116	112
Non-Jury	24	—	-2	22	39	45	—	-1	44	28
Law under \$15,000										
Jury	24	—	+1	25	24	17	—	—	17	22
Non-Jury	514	—	-1	513	459	527	—	—	527	501
Chancery	74	—	—	74	80	113	—	—	113	65
Misc. Remedies	51	—	—	51	61	95	—	—	95	71
Eminent Domain	22	—	—	22	17	21	—	—	21	19
Tax	195	—	—	195	109	193	—	—	193	133
Mun. Corps	1	—	—	1	—	3	—	—	3	—
Mental Health	25	—	—	25	13	37	—	—	37	40
Divorce	875	1	—	875	870	1043	—	—	1043	1101
Family	423	2	—	423	347	353	1	—	354	349
Juvenile	241	—	—	241	260	289	9	—	298	174
Felony	391	11	-45	391	362	442	—	-51	391	323
Misdemeanors										
Peniten.	13	1	+2	13	17	3	—	+8	11	8
Jail/Fine	1984	7	+43	1984	1981	1916	4	+43	1963	1887
Small Claims	1862	—	—	1862	1793	2149	—	—	2149	2079
Probate	576	—	—	576	651	577	2	—	579	608
Ordin. Violations	2911	—	—	2911	3021	2595	—	—	2595	2598
Traffic	16478	—	—	16478	16438	17372	—	—	17372	17332
Conservation Viol.	164	—	—	164	165	239	—	—	239	337
Total	26971	25	—	26971	26853	28142	18	—	28160	27777

Sixth Circuit

Division	1971					1972				
	Begun	Rein- stated	Trans- ferred	Net Added	Termi- nated	Begun	Rein- stated	Trans- ferred	Net Added	Termi- nated
Law over \$15,000										
July	299	14	—	313	328	234	1	+1	236	229
Non-Jury	92	—	—	92	111	91	2	-1	92	67
Law under \$15,000										
July	208	2	+2	212	116	86	—	+1	87	54
Non-Jury	1182	3	-2	1183	1655	1171	—	-1	1170	1161
Chancery	209	—	—	209	173	203	—	—	203	148
Misc. Remedies	92	—	—	92	73	120	—	—	120	76
Eminent Domain	24	—	—	24	25	4	—	—	4	18
Tax	168	—	—	168	196	226	—	—	226	224
Mun. Corps.	30	—	—	30	23	18	—	—	18	10
Mental Health	128	—	—	128	86	113	—	—	113	76
Divorce	1735	—	—	1735	1595	1910	2	—	1912	1745
Family	571	3	—	574	760	555	—	—	555	487
Juvenile	806	1	—	807	738	749	—	—	749	794
Felony	958	2	-127	833	710	1080	2	-106	976	928
Misdemeanors										
Peniten.	104	—	+24	128	108	149	—	+60	209	242
Jail/Fine	3903	2	+103	4008	3605	3892	1	+46	3939	4388
Small Claims	7302	—	—	7302	7649	7295	5	—	7300	6316
Probate	1385	—	—	1385	1156	1431	1	—	1432	1397
Ordin. Violations	3321	—	—	3321	2640	3437	—	—	3437	2593
Traffic	32014	—	—	32014	30561	33193	—	—	33193	31343
Conservation Viol.	272	—	—	272	300	428	—	—	428	430
Total	54803	27	—	54830	52608	56385	14	—	56399	52726

Seventh Circuit

Division	1971						1972					
	Begun	Rein-stated	Trans-ferred	Net-Added	Termi-nated	Begun	Rein-stated	Trans-ferred	Net-Added	Termi-nated		
Law over \$15,000												
Jury	243	1	—	244	172	212	—	—	212	172		
Non-Jury	69	—	—	69	60	63	—	—	63	55		
Law under \$15,000												
Jury	12	—	+1	13	31	27	—	—	27	15		
Non-Jury	708	1	-1	708	645	1182	1	—	1183	797		
Chancery	183	—	—	183	167	160	—	—	160	122		
Misc. Remedies	189	—	—	189	129	163	—	—	163	111		
Eminent Domain	82	—	—	82	52	112	—	—	112	57		
Tax	288	—	—	288	214	198	—	—	198	124		
Mun. Corps	—	—	—	—	18	1	—	—	1	—		
Mental Health	590	1	—	591	498	434	—	—	434	400		
Divorce	1620	7	—	1627	1939	1594	6	—	1600	1450		
Family	524	—	—	524	1817	460	1	—	461	370		
Juvenile	478	1	—	479	613	453	—	—	453	509		
Felony	692	—	-18	674	450	761	—	-10	751	456		
Misdemeanors												
Peniten.	107	—	+1	108	152	96	—	-3	93	51		
Jail/Fine	2670	2	+17	2689	2214	2190	—	+13	2203	1586		
Small Claims	4351	—	—	4351	3064	5605	67	—	5672	5118		
Probate	1339	—	—	1339	1242	1291	—	—	1291	1078		
Ordin. Viol.	706	—	—	706	687	418	—	—	418	262		
Traffic	22256	—	—	22256	21321	25253	—	—	25253	24029		
Conservation Viol.	85	—	—	85	89	92	—	—	92	72		
Total	37192	13	—	37205	35574	40765	75	—	40840	36834		

Eighth Circuit

Division	1971					1972				
	Begun	Rein-stated	Trans-ferred	Net-Added	Termi-nated	Begun	Rein-stated	Trans-ferred	Net-Added	Termi-nated
Law over \$15,000										
Jury	76	1	+10	87	93	81	1	+5	87	100
Non-Jury	26	2	-6	22	22	26	—	-4	22	22
Law under \$15,000										
Jury	29	—	+11	40	50	29	—	+9	38	43
Non-Jury	412	6	-15	403	388	350	—	-10	340	370
Chancery	78	2	—	80	96	82	—	—	82	84
Misc. Remedies	81	—	—	81	67	96	—	—	96	106
Eminent Domain	2	—	—	2	6	2	—	—	2	4
Tax	164	—	—	164	132	171	—	—	171	155
Mun. Corps	12	—	—	12	2	6	—	—	6	6
Mental Health	13	—	—	13	21	13	—	—	13	12
Divorce	663	13	—	676	658	664	1	—	665	695
Family	189	—	—	189	236	193	—	—	193	182
Juvenile	243	—	—	243	268	225	4	—	229	207
Felony	293	4	-13	284	294	292	2	-25	269	228
Misdemeanors										
Peniten.	77	—	-9	68	56	80	—	—	80	76
Jail/Fine	1157	1	+22	1180	1172	1210	—	+25	1235	1142
Small Claims	2032	3	—	2035	1988	1994	6	—	2000	1869
Probate	721	3	—	724	650	759	3	—	762	792
Ordin. Violations	1480	—	—	1480	1443	1430	—	—	1430	1430
Traffic	11969	—	—	11969	11698	12892	—	—	12892	12772
Conservation Viol.	248	—	—	248	239	226	—	—	226	224
Total	19965	35	—	20000	19579	20821	17	—	20838	20519

Ninth Circuit

Division	1971					1972				
	Begun	Rein-stated	Trans-ferred	Net Added	Termi-nated	Begun	Rein-stated	Trans-ferred	Net Added	Termi-nated
Law over \$15,000										
Jury	127	—	+2	129	127	110	3	+4	117	129
Non-Jury	24	—	-3	21	14	25	—	-3	22	48
Law under \$15,000										
Jury	20	1	+15	36	38	41	1	+11	53	55
Non-Jury	428	—	-14	414	366	442	6	-12	436	454
Chancery	78	1	—	79	85	88	—	—	88	85
Misc. Remedies	96	—	—	96	72	95	—	—	95	96
Eminent Domain	10	—	—	10	7	5	—	—	5	8
Tax	301	—	—	301	254	240	—	—	240	253
Mun. Corps	2	—	—	2	1	2	—	—	2	3
Mental Health	149	—	—	149	172	158	—	—	158	178
Divorce	925	1	—	926	908	1010	11	—	1021	1029
Family	262	—	—	262	265	242	3	—	245	223
Juvenile	170	—	—	170	127	260	—	—	260	179
Felony	417	—	-62	355	252	356	1	-47	310	363
Misdemeanors										
Peniten.	15	—	+2	17	13	70	—	-1	69	46
Jail/Fine	2035	3	+60	2098	2045	1981	1	+48	2030	2036
Small Claims	1607	1	—	1608	1409	2148	—	—	2148	2109
Probate	948	6	—	954	934	1010	4	—	1014	1038
Ordin. Violations	2025	—	—	2025	1885	2127	—	—	2127	2028
Traffic	17423	2	—	17425	17076	17889	—	—	17889	17373
Conservation Viol.	457	—	—	457	415	502	—	—	502	408
Total	27519	15	—	27534	26465	28801	30	—	28831	28141

Tenth Circuit

Division	1971					1972				
	Begun	Rein-stated	Trans-ferred	Net Added	Termi-nated	Begun	Rein-stated	Trans-ferred	Net Added	Termi-nated
Law over \$15,000										
July	545	2	+5	552	629	641	1	+1	643	641
Non-Jury	103	—	-3	100	65	77	—	-1	76	96
Law under \$15,000										
July	138	2	+22	162	214	113	—	+12	125	213
Non-Jury	918	2	-24	896	824	882	2	-12	872	858
Chancery	241	2	—	243	204	207	—	—	207	240
Misc. Remedies	141	—	—	141	135	207	—	—	207	177
Eminent Domain	19	—	—	19	16	3	—	—	3	7
Tax	607	1	—	608	456	275	—	—	275	630
Mun. Corps	—	—	—	—	—	2	—	—	2	1
Mental Health	352	—	—	352	321	326	—	—	326	354
Divorce	1927	11	—	1938	2046	2049	13	—	2062	1924
Family	790	1	—	791	699	579	—	—	579	703
Juvenile	440	—	—	440	469	600	—	—	600	563
Felony	483	2	—	485	523	751	10	-9	752	842
Misdemeanors										
Peniten.	109	—	—	109	90	404	—	-16	388	282
Jail/Fine	3624	12	—	3636	3117	3104	—	+25	3129	3342
Small Claims	4710	—	—	4710	4055	5378	2	—	5380	5382
Probate	1170	3	—	1173	909	1223	—	—	1223	1200
Ordin. Violations	3023	2	—	3025	2751	2179	—	—	2179	2292
Traffic	31523	16	—	31539	32227	32368	—	—	32368	32698
Conservation Viol.	402	—	—	402	401	352	—	—	352	347
Total	51265	56	—	51321	50151	51720	28	—	51748	52792

Eleventh Circuit

Division	1971						1972					
	Begun	Rein- stated	Trans- ferred	Net Added	Termi- nated	Begun	Rein- stated	Trans- ferred	Net Added	Termi- nated		
Law over \$15,000												
Jury	216	8	+10	234	224	191	20	+5	216	291		
Non-Jury	70	2	-10	62	70	59	4	5	58	69		
Law under \$15,000												
Jury	54	4	+22	80	60	52	2	+17	71	81		
Non-Jury	572	19	-22	569	607	613	25	-17	621	704		
Chancery	126	8	—	134	128	107	1	—	108	123		
Misc. Remedies	91	—	—	91	76	102	—	—	102	102		
Eminent Domain	52	—	—	52	56	127	4	—	131	81		
Tax	211	—	—	211	179	255	—	—	255	288		
Mun. Corps	8	—	—	8	7	3	1	—	4	3		
Mental Health	38	—	—	38	36	26	—	—	26	13		
Divorce	976	16	—	992	953	1021	30	—	1051	1109		
Family	374	1	—	375	311	282	2	—	284	339		
Juvenile	309	—	—	309	297	270	1	—	271	246		
Felony	497	6	-1	502	382	441	13	-9	445	496		
Misdemeanors												
Peniten.	92	4	-2	4	71	59	1	—	60	56		
Jail/Fine	2908	91	+3	3002	3019	2546	94	+9	2649	3042		
Small Claims	3752	59	—	3811	3818	3656	76	—	3732	3750		
Probate	1291	2	—	1293	1153	1325	3	—	1328	1134		
Ordin. Violations	952	13	—	965	938	1040	6	—	1046	1040		
Traffic	28505	51	—	28556	28547	30569	68	—	30637	30661		
Conservation Viol.	173	2	—	175	176	129	4	—	133	119		
Total	41267	286	—	41553	41108	42873	355	—	43228	43747		

Twelfth Circuit

Division	1971					1972				
	Begun	Rein- stated	Trans- ferred	Net Added	Termi- nated	Begun	Rein- stated	Trans- ferred	Net Added	Termi- nated
Law over \$15,000										
Jury	328	11	110	449	523	300	16	+120	436	472
Non-Jury	239	16	-106	149	173	280	3	-113	170	97
Law under \$15,000										
Jury	69	15	+86	170	195	53	12	+80	145	168
Non-Jury	1393	113	-76	1430	1427	1418	67	-81	1404	1278
Chancery	303	6	—	309	243	329	4	—	333	325
Misc. Remedies	171	—	—	171	139	153	—	—	153	132
Eminent Domain	48	1	—	49	31	48	2	—	50	64
Tax	328	4	—	332	1030	434	3	—	437	334
Mun. Corps	6	—	—	6	3	4	—	—	4	4
Mental Health	399	—	—	399	393	292	—	—	292	291
Divorce	1766	156	—	1922	1855	1807	49	—	1856	1777
Family	589	26	—	615	544	502	21	—	523	854
Juvenile	346	40	—	386	313	448	31	—	479	327
Felony	515	6	-73	448	419	519	11	-69	461	456
Misdemeanors										
Peniten.	253	4	+5	262	278	220	—	—	220	205
Jail/Fine	2276	10	+68	2354	2220	2342	6	+69	2417	2371
Small Claims	5139	197	-14	5322	5192	4905	151	-6	5050	5032
Probate	905	—	—	905	784	1003	1	—	1004	823
Ordin. Violations	2999	5	—	3004	2834	2681	4	—	2685	2670
Traffic	38175	179	—	38354	38067	43840	152	—	43992	43203
Conservation Viol.	666	—	—	666	652	796	—	—	796	816
Total	56913	789	—	57702	57315	62374	533	—	62907	61699

Thirteenth Circuit

Division	1971					1972				
	Begun	Rein- stated	Trans- ferred	Net Added	Termi- nated	Begun	Rein- stated	Trans- ferred	Net Added	Termi- nated
Law over \$15,000										
Jury	232	8	+17	257	379	211	14	+21	246	354
Non-Jury	102	—	-17	85	136	70	8	-21	57	56
Law under \$15,000										
Jury	36	—	+24	60	42	15	5	+13	33	131
Non-Jury	537	1	-24	514	487	426	9	-13	422	467
Chancery	104	—	—	104	118	111	1	—	112	87
Misc. Remedies	69	—	—	69	69	73	—	—	73	54
Eminent Domain	41	1	—	42	19	27	2	—	29	25
Tax	52	—	—	52	50	85	—	—	85	46
Mun. Corps	—	—	—	—	—	2	—	—	2	—
Mental Health	17	—	—	17	24	21	—	—	21	22
Divorce	815	2	—	817	840	814	4	—	818	769
Family	363	—	—	363	401	298	—	—	298	267
Juvenile	188	—	—	188	146	198	—	—	198	173
Felony	142	—	-43	99	166	217	—	-24	193	170
Misdemeanors										
Peniten.	20	—	+1	21	16	7	—	-1	6	8
Jail/Fine	2241	—	+42	2283	2284	2261	—	+25	2286	2234
Small Claims	4542	1	—	4543	4715	3965	—	—	3965	3973
Probate	762	—	—	762	683	747	—	—	747	864
Ordin. Violations	793	—	—	793	806	763	—	—	763	745
Traffic	15397	—	—	15397	14965	16468	1	—	16469	16043
Conservation Viol.	186	—	—	186	219	193	—	—	193	201
Total	26639	13	—	26652	26565	26972	44	—	27016	26689

Fourteenth Circuit

Division	1971					1972				
	Begun	Rein-stated	Trans-ferred	Net Added	Termi-nated	Begun	Rein-stated	Trans-ferred	Net Added	Termi-nated
Law over \$15,000										
Jury	199	11	+34	244	292	226	12	+9	247	249
Non-Jury	54	4	-33	25	76	77	2	-9	70	47
Law under \$15,000										
Jury	70	6	+54	130	91	81	3	+27	111	84
Non-Jury	953	5	-54	904	1000	684	2	-27	659	699
Chancery	243	6	—	249	276	222	4	—	226	240
Misc. Remedies	110	3	—	113	101	141	1	—	142	108
Eminent Domain	51	1	—	52	35	45	8	—	53	40
Tax	207	—	—	207	309	241	—	—	241	200
Mun. Corps	—	—	—	—	—	—	—	—	—	—
Mental Health	239	2	—	241	241	322	10	—	332	331
Divorce	1733	11	—	1744	1786	1644	9	—	1653	1665
Family	723	1	—	724	749	557	11	—	568	758
Juvenile	478	—	—	478	623	454	57	—	511	650
Felony	924	1	—	925	875	788	3	-9	782	732
Misdemeanors										
Peniten.	1	—	—	1	1	1	—	—	1	1
Jail/Fine	4766	2	—	4768	4812	4601	3	+9	4613	4336
Small Claims	5454	17	-1	5470	5785	4193	13	—	4206	4309
Probate	1212	1	—	1213	1022	1194	—	—	1194	942
Ordin. Violations	1158	1	—	1159	1099	959	—	—	959	929
Traffic	37211	1	—	37212	36891	39060	5	—	39065	37597
Conservation Viol.	398	—	—	398	435	462	—	—	462	1100
Total	56184	73	—	56257	56499	55952	143	—	56095	55017

Fifteenth Circuit

Division	1971						1972					
	Begun	Rein-stated	Trans-ferred	Net-Added	Termi-nated	Begun	Rein-stated	Trans-ferred	Net-Added	Termi-nated		
Law over \$15,000												
Jury	74	—	+14	88	109	86	—	+9	95	100		
Non-Jury	35	—	-10	25	27	75	2	-7	70	48		
Law under \$15,000												
Jury	30	1	+10	41	40	19	—	+3	22	29		
Non-Jury	403	4	-14	393	457	360	4	—	364	365		
Chancery	109	—	—	109	94	99	3	-5	97	112		
Misc. Remedies	45	—	—	45	32	29	—	—	29	31		
Eminent Domain	39	—	—	39	5	5	—	—	5	7		
Tax	118	2	—	120	127	136	—	—	136	135		
Mun. Corps	3	—	—	3	3	1	—	—	1	1		
Mental Health	43	3	—	46	46	25	1	—	26	16		
Divorce	637	9	—	646	755	744	3	—	747	743		
Family	374	1	—	375	317	385	2	—	387	286		
Juvenile	233	1	—	234	167	243	1	—	244	204		
Felony	465	1	-31	435	328	360	3	-26	337	367		
Misdemeanors												
Peniten.	185	—	+4	189	126	280	1	-1	280	297		
Jail/Fine	2956	—	+27	2983	2747	3047	1	+27	3075	3012		
Small Claims	1802	1	—	1803	1681	1813	2	—	1815	1833		
Probate	882	1	—	883	715	811	4	—	815	806		
Ordin. Violations	1432	—	—	1432	1336	1382	1	—	1383	1298		
Traffic	16998	—	—	16998	16290	16917	—	—	16917	16494		
Conservation Viol.	539	—	—	539	521	602	—	—	602	597		
Total	27402	24	—	27426	25923	27419	28	—	27447	26781		

Sixteenth Circuit

Division	1971					1972				
	Begun	Retn- stated	Trans- ferred	Net Added	Termi- nated	Begun	Retn- stated	Trans- ferred	Net Added	Termi- nated
Law over \$15,000										
Jury	334	1	+13	348	490	328	20	+9	357	393
Non-Jury	216	—	-11	205	183	181	6	-7	180	195
Law under \$15,000										
Jury	87	1	+21	109	114	71	7	+24	102	140
Non-Jury	1024	5	-21	1008	1087	1012	26	-25	1013	989
Chancery	226	1	—	227	267	257	4	—	261	255
Misc. Remedies	122	—	—	122	107	125	6	—	131	129
Eminent Domain	28	—	—	28	6	18	1	—	19	30
Tax	307	5	—	312	254	383	1	—	384	348
Mun. Corps	3	—	—	3	2	—	—	—	—	—
Mental Health	1046	—	—	1046	1049	650	—	—	650	581
Divorce	1929	31	—	1960	1979	2142	50	—	2192	2078
Family	707	2	—	709	817	632	10	—	633	643
Juvenile	552	28	—	580	555	609	30	—	639	596
Felony	900	—	-2	898	1014	959	3	-15	947	730
Misdemeanors										
Peniten.	242	—	-3	239	183	450	—	-3	447	419
Jail/Fine	5140	—	+5	5145	4845	5110	—	+18	5128	5310
Small Claims	7830	—	-2	7828	8694	9232	132	-1	9363	9340
Probate	1070	—	—	1070	1298	1028	—	—	1028	943
Ordin. Violations	2064	—	—	2064	2080	2137	—	—	2137	2022
Traffic	50151	—	—	50151	46597	46398	—	—	46398	47141
Conservation Viol.	170	—	—	170	164	165	—	—	165	175
Total	74148	74	—	74222	71785	71915	296	—	72211	72516

Seventeenth Circuit

Division	1971					1972				
	Begun	Rein-stated	Trans-ferred	Net Added	Termi-nated	Begun	Rein-stated	Trans-ferred	Net Added	Termi-nated
Law over \$15,000										
Jury	292	2	+3	297	328	262	5	+1	268	274
Non-Jury	77	—	-3	74	83	69	2	-1	70	73
Law under \$15,000										
Jury	68	1	+5	74	135	66	1	+2	69	84
Non-Jury	1231	2	-5	1228	1254	1020	4	-2	1022	1328
Chancery	371	1	—	372	328	338	2	—	340	356
Misc. Remedies	184	1	—	185	127	208	—	—	208	158
Eminent Domain	22	—	—	22	15	12	1	—	13	14
Tax	24	—	—	24	28	63	—	—	63	41
Mun. Corps	—	—	—	—	—	—	—	—	—	—
Mental Health	685	38	—	723	681	776	—	—	776	833
Divorce	1701	—	—	1701	1341	1773	13	—	1786	2105
Family	862	25	—	887	760	731	52	—	783	738
Juvenile	606	227	—	833	1207	827	248	—	1075	1357
Felony	645	2	-102	545	359	823	4	-185	642	416
Misdemeanors										
Peniten.	179	—	-28	151	112	265	1	-70	196	109
Jail/Fine	3389	19	+130	3538	4197	3504	13	+255	3772	3670
Small Claims	11094	46	—	11140	12100	7476	14	—	7490	8902
Probate	924	—	—	924	586	957	—	—	957	686
Ordin. Violations	2248	—	—	2248	2229	3747	—	—	3747	3640
Traffic	47332	—	—	47332	47082	52235	—	—	52235	51287
Conservation Viol.	88	—	—	88	88	88	—	—	88	84
Total	72022	364	—	72386	73040	75240	360	—	75600	76155

Eighteenth Circuit

Division	1971					1972				
	Begun	Rein-stated	Trans-ferred	Net Added	Termi-nated	Begun	Rein-stated	Trans-ferred	Net Added	Termi-nated
Law over \$15,000										
Jury	409	20	+155	584	675	464	11	+150	625	558
Non-Jury	322	10	-155	177	138	327	3	-150	180	125
Law under \$15,000										
Jury	96	8	+80	184	190	73	6	+79	158	142
Non-Jury	1340	21	-80	1281	1159	1424	5	-79	1350	1097
Chancery	296	17	—	313	256	300	7	—	307	222
Misc. Remedies	281	—	—	281	221	308	—	—	308	204
Eminent Domain	27	—	—	27	60	24	—	—	24	15
Tax	20470	—	—	20470	19803	11867	—	—	11867	11313
Mun. Corps	—	—	—	—	—	—	—	—	—	—
Mental Health	18	—	—	18	7	18	—	—	18	2
Divorce	1762	8	—	1770	1644	1950	22	—	1972	1980
Family	585	—	—	585	576	564	—	—	564	708
Juvenile	603	—	—	603	496	559	—	—	559	454
Felony	1550	6	—	1550	1230	1371	95	—	1466	1336
Misdemeanors										
Peniten.	320	—	—	320	261	—	—	—	—	—
Jail/Fine	3566	—	—	3566	3098	4329	—	—	4329	3729
Small Claims	3161	—	—	3161	3086	3258	—	—	3258	3241
Probate	732	—	—	732	605	671	—	—	671	553
Ordin. Violations	7296	—	—	7296	6525	8397	—	—	8397	6890
Traffic	57466	—	—	57466	56472	58737	—	—	58737	54192
Conservation Viol.	—	—	—	—	214	—	—	—	—	—
Total	100300	90	—	100300	96502	94641	149	—	94790	86761

Nineteenth Circuit

Division	1971						1972					
	Begun	Rein-stated	Trans-ferred	Net Added	Termi-nated		Begun	Rein-stated	Trans-ferred	Net Added	Termi-nated	
Law over \$15,000												
Jury	536	7	+8	551	604		439	9	+8	456	551	
Non-Jury	253	2	-7	248	261		230	3	-7	226	281	
Law under \$15,000												
Jury	98	1	+2	101	79		81	3	+6	90	105	
Non-Jury	1827	12	+1	1840	1502		1842	8	-6	1844	2132	
Chancery	521	1	—	522	472		481	2	—	483	568	
Misc. Remedies	193	—	—	193	158		209	—	—	209	170	
Eminent Domain	23	—	—	23	24		20	—	—	20	22	
Tax	125	—	—	125	130		150	—	—	150	147	
Mun. Corps	5	—	—	5	8		20	—	—	20	14	
Mental Health	113	—	—	113	107		145	—	—	145	149	
Divorce	2377	1	—	2378	2262		2629	2	—	2631	2534	
Family	851	—	—	851	741		909	—	—	909	857	
Juvenile	703	—	—	703	435		722	—	—	722	602	
Felony	616	—	-4	612	569		520	—	-3	517	433	
Misdemeanors												
Peniten.	116	—	-1	115	83		159	—	-2	157	189	
Jail/Fine	5001	—	+5	5006	4997		4743	—	+5	4748	5045	
Small Claims	14132	—	-4	14128	15962		12028	—	-1	12027	1103	
Probate	1897	—	—	1897	1637		1729	—	—	1729	1682	
Ordin. Violations	6089	—	—	6089	5638		6585	—	—	6585	5721	
Traffic	63331	—	—	63331	61626		62599	—	—	62599	61755	
Conservation Viol.	214	—	—	214	216		269	—	—	269	285	
Total	99021	24	—	99045	97511		96509	27	—	96536	94274	

Twentieth Circuit

Division	1971					1972				
	Begun	Rein-stated	Trans-ferred	Net Added	Termi-nated	Begun	Rein-stated	Trans-ferred	Net Added	Termi-nated
Law over \$15,000										
Jury	621	12	+20	653	695	519	19	+13	551	788
Non-Jury	129	3	-8	124	55	110	6	-3	113	62
Law under \$15,000										
Jury	291	13	+17	321	606	248	7	+37	292	413
Non-Jury	1007	21	-25	1003	1200	847	23	—	263	221
Chancery	266	2	—	268	267	261	2	—	263	221
Misc. Remedies	215	—	—	215	162	386	4	—	390	425
Eminent Domain	163	—	—	163	24	10	16	—	26	131
Tax	3463	1	—	3464	4794	4594	1	—	4595	3923
Mun. Corps	11	—	—	11	—	3	—	—	3	21
Mental Health	176	—	—	176	169	125	—	—	125	127
Divorce	1839	18	—	1857	1604	1877	12	—	1889	1446
Family	1012	19	—	1031	611	678	6	—	684	524
Juvenile	703	—	—	703	598	574	28	—	602	602
Felony	524	12	-3	533	494	416	12	-6	422	403
Misdemeanors										
Peniten.	27	—	-3	24	57	137	—	+5	142	61
Jail/Fine	3924	2	+6	3932	3783	3117	28	+1	3146	2840
Small Claims	4282	—	-4	4278	4516	3991	4	—	3995	4110
Probate	1166	8	—	1174	973	1238	11	—	1249	974
Ordin. Violations	2131	—	—	2131	1865	2605	—	—	2605	2243
Traffic	24928	—	—	24928	22979	28186	—	—	28186	26970
Conservation Viol.	113	—	—	113	111	75	—	—	75	80
Total	46991	111	—	47102	45563	49997	179	—	50176	47273

Cook County

Division	1971					1972				
	Begun	Rein-stated	Trans-ferred	Net Added	Termi-nated	Begun	Rein-stated	Trans-ferred	Net Added	Termi-nated
Law over \$15,000										
Jury	2834	1190	+10706	14730	18247	2715	2411	+9784	14910	19005
Non-Jury	13502	1172	-10706	3968	7241	13875	1798	-9784	5889	4597
Law under \$15,000										
Jury	8625	1333	+2878	12836	13501	6592	2331	+2206	11129	13074
Non-Jury	79193	2260	-2864	78589	81758	78509	1632	-2194	78047	10221
Chancery	12801	84	—	12885	13099	7849	—	—	7849	8192
Misc. Remedies	960	7	—	967	665	997	4	—	1001	626
Eminent Domain	142	—	—	142	83	161	—	—	161	153
Tax	91023	2656	—	93679	85524	85541	3273	—	88814	84942
Mun. Corps	73	—	—	73	36	65	1	—	66	33
Mental Health	3327	—	—	3327	3373	3414	—	—	3414	3411
Divorce	25956	160	—	26116	27956	27106	—	—	27106	27097
Family	51555	—	—	51555	51022	47164	—	—	47164	46741
Juvenile	31131	79	—	31210	35319	21859	125	—	21984	23710
Felony	4522	—	—	4522	5216	5076	—	—	5076	4486
Misdemeanors										
Peniten.	—	—	—	—	—	1795	—	—	1795	1213
Jail/Fine	3076	—	—	3076	1821	263234	—	—	263234	249275
Small Claims	77270	398	-14	77654	77606	76618	574	-12	77180	76389
Probate	10731	—	—	10731	10580	10652	—	—	10652	9830
Ordin. Violations	278903	—	—	278903	228503	—	—	—	—	—
Traffic	1385339	—	—	1385339	1372446	1279877	—	—	1279877	1282295
Conservation Viol.	—	—	—	—	—	—	—	—	—	—
Total	2080963	9339	—	2090302	2033996	1933099	12149	—	1945348	1865290

*Keep abreast of all major changes
in the criminal law with*

The CRIMINAL LAW REPORTER

To keep up with all that's happening today in the rapidly changing field of criminal law, you need The CRIMINAL LAW REPORTER. The scope of the REPORTER is as broad as the field it covers, ranging from the day-to-day interpretation and application of the existing criminal law as reflected in the opinions and proceedings of courts at every level . . . to the formulation of new legislation . . . to unconventional (and controversial) proposals for socio-economic approaches to crime and the criminal.

Each week you get a crisply written review and analysis of the latest criminal law developments. You get Supreme Court proceedings, arguments, actions, and filings. You get decisions and proceedings of federal courts of appeals and district courts, as well as the principal courts of all the states. You get a roundup of notable actions in Congress and the state legislatures. You get digests of reports and recommendations of commissions, associations, committees, the bar, and the press. You get the full text of all opinions of the U.S. Supreme Court in criminal cases, and of significant federal legislation. You get cumulative indexes every six weeks, and a final index for the six-month period covered by each REPORTER volume.

You get all this—plus a sturdy filing and reference binder—when you get The CRIMINAL LAW REPORTER.

For additional information and particulars of subscription rates, please write:



THE BUREAU OF NATIONAL AFFAIRS, INC.
1231 25th St. N.W., Washington, D.C. 20037