


11-12-2020

Lab Notes

Follow this and additional works at: <https://via.library.depaul.edu/scientia>

 Part of the [Biology Commons](#), [Environmental Studies Commons](#), [Nursing Commons](#), [Psychology Commons](#), and the [Science and Technology Studies Commons](#)

Recommended Citation

(2020) "Lab Notes," *Scientia*: Vol. 1 : Iss. 13 , Article 3.

Available at: <https://via.library.depaul.edu/scientia/vol1/iss13/3>

This Article is brought to you for free and open access by the Alumni Publications at Via Sapientiae. It has been accepted for inclusion in *Scientia* by an authorized editor of Via Sapientiae. For more information, please contact digitalservices@depaul.edu.



Paleo Showcase

Prior to the COVID-19 pandemic's arrival in the United States, biological sciences students Jonathan Allen, Myles Walsh, Riley Hacker and Alexandra Krak presented paleobiological projects at the Great Lakes Student Paleoconference at the University of Michigan at Ann Arbor. In collaboration with Paleobiology Professor Kenshu Shimada, the students conducted research on marine fossils in the Niobrara Chalk Formation, body morphology of quadrupedal nonavian dinosaurs, an ichthyodectiform fish from a Cretaceous deposit in Texas and the comparative anatomy of megamouth shark teeth.

Expert Opinions

DePaul's [Public Voices Thought Leadership Fellowship](#), in partnership with [The OpEd Project](#), seeks to increase the visibility and influence of researchers, especially women, who are underrepresented in the media. Associate Professor of Environmental Science Christie Klimas, Associate Dean for Research Susan McMahon, Associate Professor of Psychology Megan Greeson and Associate Professor and Chair of Health Sciences Douglas Bruce received training as fellows and published op-eds in such publications as Better, The Hill, Ms. and The Health Care Blog, including the following:

[From COVID-19 to Fashion: The Global Ripple Effect of Our Actions](#)

[Teachers Suffer Too: School Violence Is a Daily Reality](#)

[Weinstein Conviction To Be Celebrated, But Does Not Represent Justice for All](#)

[Doctors Lack Knowledge about Medical Cannabis Use. Their Patients Can Help.](#)

[See the full list of DePaul faculty-written op-eds here.](#)



CSH Honors Award Recipients

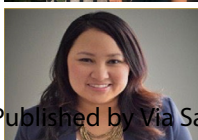
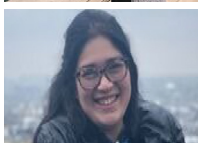
Outstanding undergraduate students and faculty mentors recognized at last spring's Honors Celebration, held online, included:

Claire Black, Outstanding Community Service Award

Jazlyn Marcos, Excellence in Undergraduate Research Award

Devin Becker, Walter A. Pranger Award in Mathematics

Cricel Molina De Mesa, Faculty Mentor of the Year

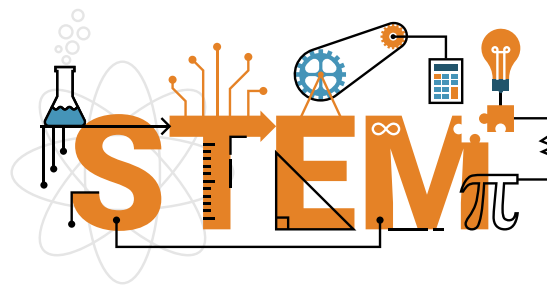


School of Nursing Director Appointed

Suling Li was appointed chief nursing officer and director of the School of Nursing in July. Previously, Li was the associate dean and director of the graduate studies in nursing programs at Lewis University. Li takes over from Kim Amer, who served as interim director and is returning to the faculty.

EPISTEM Project

CSH was awarded a National Science Foundation \$1 million grant to support DePaul's EPISTEM Project (Engage and Persist in STEM). The project will help to fill the national need for well-educated scientists, mathematicians, engineers and other STEM professionals by supporting the retention and graduation of high-achieving, low-income students. Over its four-year duration, the project will fund scholarships for 16 full-time students who pursue STEM bachelor's degrees. EPISTEM aims to increase student persistence in STEM by linking scholarships with effective supporting activities, including peer mentoring, internships, study groups and tutoring, academic advising, exploration of and preparation for STEM careers, research with STEM faculty, and graduate school preparation.



Diversity Fellowship

Jesus Solano-Martinez, a doctoral student in clinical child psychology, was awarded the Diversifying Faculty in Illinois (DFI) Fellowship for 2020–21. This prestigious fellowship is available for up to four years. The goal of DFI is to increase the number of tenure-track faculty and staff from underrepresented and minority groups at Illinois' two- and four-year public and private colleges and universities.